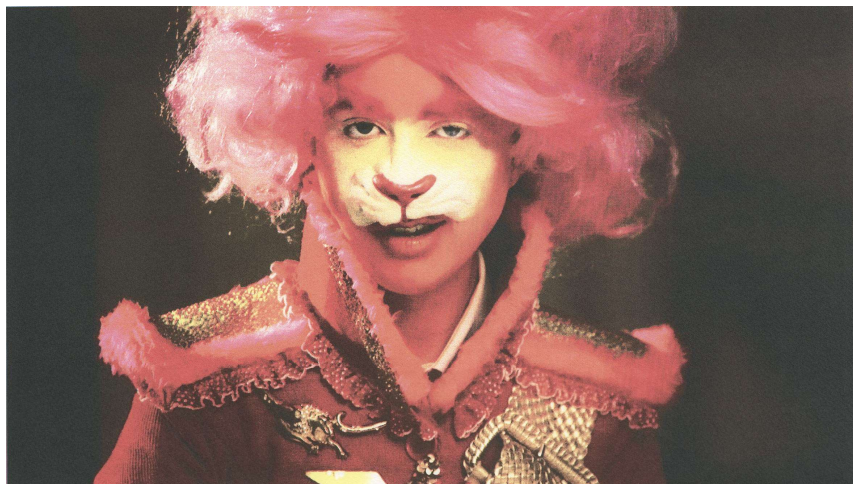


MEDIA RELEASE: EMBARGOED UNTIL 13:00 on 06/11/20

Rare prints by leading Scottish artists go on sale as Edinburgh Printmakers take archive exhibition digital

- Work by leading Scottish artists from the past 50 years made at Edinburgh Printmakers selected for a special archive exhibition running from 6 November until 31 January: *From the Archive*.
- First ever digital exhibition at Edinburgh Printmakers as Galleries at Castle Mills remains closed.
- Prints are available to buy from less than £250 and include works by Callum Innes, Rachel Maclean, Alasdair Gray, John Byrne, John Bellany, Louise Hopkins, Carol Rhodes and more.

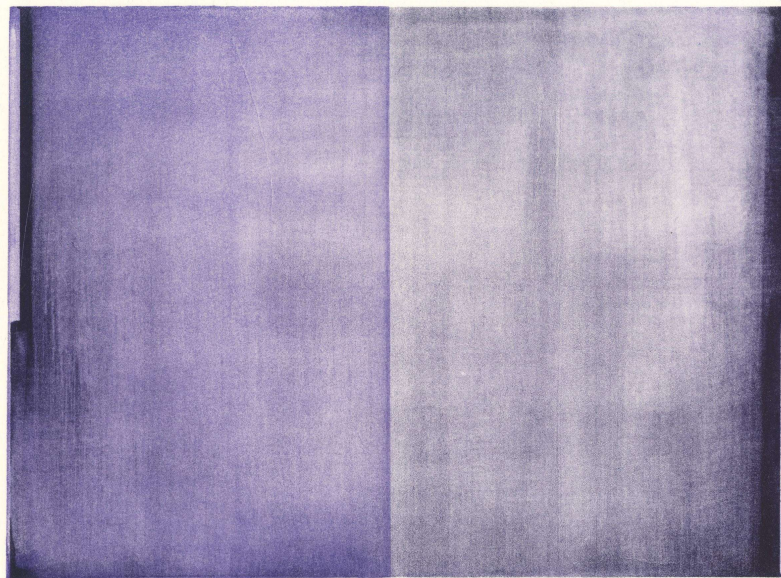
In response to the coronavirus pandemic Edinburgh Printmakers (EP) has moved its gallery online and this Friday (November 6) marks the first archive exhibition since relocating to Castle Mills in Fountainbridge. Showcasing a collection of rare prints for sale by leading Scottish artists the *From the Archive* digital exhibition allows viewers to discover some of the treasures in the Edinburgh Printmakers archive that stretches back over 50 years. Highlights include, Callum Innes' *CMW1*, John Bellany's *The Barber's Chair*, Rachel Maclean's *The Lion*, John Byrne's *Moonstruck*, Adrian Wiszniewski's *Tate Etat* as well prints by Louise Hopkins, Toby Paterson, Kate Downie, Graham Fagen, Alasdair Gray, and Calum Colvin.



Rachel MacLean, *The Lion*, 2018, Screenprint on Somerset Satin 300gsm, Image 25.2 x 44.7 cm, Paper 38 x 55.5 cm, Edition of 20, £475

Visitors to www.edinburghprintmakers.co.uk can see the works as an exhibition experience and learn the stories behind them in EP's Viewing Rooms. The Viewing Room features work by EP alumni dating back to 1967, all artists who've worked alongside EP's printmaking team to develop their professional practice and produce prints in close collaboration with EP's own technicians. Works by living artists can be purchased with an interest free loan from Own Art.

Edinburgh Printmakers publish original fine art prints in limited editions. In addition to being signed by the artist, each print in an edition is given an edition number, written as a fraction. The number to the right of the slash indicates the edition size, while the figure to the left is the individual print's number. Edinburgh Printmakers embossed EPW in the paper to mark that an edition was printed at EP, reinforcing the print's authenticity. All artworks are monogrammed or signed by the artist.



Callum Innes, *CMW1*, 2018, Stone Lithograph on Fabriano Artistico 300gsm, Image 22 x 30.4 cm, Paper 38.5 x 49.5 cm, Edition of 20, £475

Running from 6 November until 31 January *From the Archive* will be the first of a series of curated digital exhibitions highlighting collections of rare or unseen prints from the Edinburgh Printmakers archives which are currently home to over 4000 prints. Galleries at Castle Mills remain closed to the public until 2021 and subject to Scottish Government guidelines, *From the Archive* allows the Edinburgh Printmakers team to share some of the hidden treasures in the building.

Speaking at the launch of *From the Archive* CEO Shân Edwards said: "With limited access to the building our team have been painstakingly cataloguing over 50 years of archive prints. The works selected for this exhibition are an opportunity to see how printmaking has been a key part of the practice of some of Scotland's most well known artists. From those exploring printmaking within a wider practice, with support from the Print Studio team, to others for whom printmaking

is their central activity, this exhibition provides an opportunity to purchase original artworks and make both a personal investment and an investment in the Scottish art community.”

Listings Information

From the Archive

6 November 2020 to 31 January 2021

Online at www.edinburghprintmakers.co.uk

For further information, images and interview requests please contact:

Owen O’Leary owen@olearyjeffs.com / +44 7815 992658

Nicola Jeffs nicola@olearyjeffs.com / +44 7794 694 754

View and download hi res images here:

<https://app.box.com/s/76qgk86a9se647w0napyvytm5smey4n2>

ENDS>

Notes to Editors

The full list of works are:

[Ravi Agarwal, *Landscape Series 1*, 2018, Lithograph on Fabriano Artistico 300gsm, 56 x 74.5 cm, Edition of 10 - £450](#)

[Art & Language, *Illustrations for Art-Language 10*, 2011, Screenprint, 65.5 x 50 cm, Edition of 20 - £350](#)

[John Bellany, *The Barber’s Chair*, 1986, Etching, 45 x 62 cm, Edition of 50 - £700](#)

[John Byrne, *Moonstruck*, 2014, Stone Lithograph on Velin Arches Blanc 250gsm, 51 x 38.3 cm, Edition of 40 - £400](#)

[Calum Colvin, *Fragment 1*, 2014, Etching & Photopolymer Gravure, 80 x 64 cm, Edition of 15 - £500](#)

[Alan Davie, *Insignias for Magic*, 2001, Etching and Chine Collé, 53 x 56 cm, Edition of 75 - £550](#)

[Donovan & Siegel, *And*, 2016, Embossed archival inkjet on Hahnemuhle 300gsm, 39 x 48.5 cm, Edition of 20 - £220](#)

[Katy Dove, *Double Life*, 2004, Screenprint, 45 x 38 cm, Edition of 14 - £320](#)

[Katy Dove, *Double You*, 2004, Screenprint, 45 x 38 cm, Edition of 14 - £320](#)

[Kate Downie, *Blueprint for the Future*, 2015, Cyanotype, 35 x 58 cm, Edition of 30 - £360](#)

Graham Fagen, *My Favourite Flower is the Pansy*, 2004, Screenprint, 57 x 38 cm, Edition of 26 - £250

Alasdair Gray, *Ina*, 2011, Screenprint, 69 x 40 cm, Edition of 50 - £480

Eric Great-Rex, *If a Bird Lands on your Head does it Build a Nest?* (ochre), 2017, Stone lithograph with screenprint, 62.5 x 62.5 cm, Edition of 14 - £300

Eric Great-Rex, *If a Bird Lands on your Head does it Build a Nest?* (purple), 2017, Stone lithograph with screenprint, 62.5 x 62.5 cm, Edition of 14 - £300

Eric Great-Rex, *Love Hot Cold Fresh Stale Betrayed Denied*, 2017, Stone lithograph with Screenprint, 38.5 x 45.7 cm, Edition of 20 - £250

Eric Great-Rex, *Incomplete Meanings*, 2017, Stone and plate lithograph, 36 x 45.5 cm, Edition of 30 - £250

Louise Hopkins, *Arrangement with Moving Parts*, 2014, Blind embossed etching on Somerset Satin White, 250gsm, 57 x 72.5 cm, Edition of 30 - £540

Louise Hopkins, *Landscape with Red, Blue and Black*, 2014, Digital print, 52 x 73 cm, Edition of 30 - £540

Callum Innes, *CMW1*, 2018, Stone Lithograph on Fabriano Artistico 300gsm, 38.5 x 49.5 cm, Edition of 20 - £475

Andrew Mackenzie, *River Print 1*, 2013, Lithograph on Somerset Satin White, 300gsm, 50.5 x 67.3 cm, Edition of 24 - £400

Rachel Maclean, *The Lion*, 2018, Screenprint on Somerset Satin 300gsm, 38 x 55.5 cm, Edition of 20 - £475

Imi Maufe, *Translating Travels*, 2017, Screenprint on Somerset Satin White 300gsm, 76 x 56 cm, Edition of 20 - £270

Chad McCail, *the competitive reflex is not developed*, 2008, Screenprint, 56,5 x 76 cm, Edition of 30 - £420

Ian McCulloch, *The Return of Agamemnon 1*, 1995, Reduction Linocut, 73 x 57 cm, Edition of 20 - £270

Lisa Milroy, *Flowers*, 1999, Screenprint, 61 x 61 cm, Edition of 40 - £520

[Scott Myles, *Reciprocity on Three Planes*, 2009, Screenprint with varnish, 75.5 x 58 cm, Edition of 30 - £450](#)

[Toby Paterson, *St Ives Axonometric Brown*, 2006, Screenprint, 53.8 x 62.5 cm, Edition of 50 - £600](#)

[Carol Rhodes, *Roads Buildings \(Night\)*, 2014, Thirteen-colour screenprint on Fabriano Artistico 300gsm, 55.5 x 57.5 cm, Edition of 22 - £1,440.00](#)

[Bronwen Sleigh, *Jattavagen*, 2013, Stone and plate lithograph printed in 4 colours on BFK Rives Grey paper, 61.5x81.5 cm, Edition of 20 - £600](#)

[Graeme Todd, *More Like Shacks than Houses*, 2009, Screenprint, 56 x 76 cm, Edition of 30 - £320](#)

[Adrian Wiszniewski, *Tate Etat*, 2014, Two-colour stone and plate lithograph, 69.5 x 56.4 cm, Edition of 20 - £600](#)